

台灣公司 TAIWAN OFFICE

Yean Hern Corp. | 沅亨興業股份有限公司

No. 28, Heye 8th Rd., Daliao Dist., Kaohsiung City 831130, Taiwan

831130 高雄市大寮區和業八路28號

T. +886-7-7874567 | F. +886-7-7887867

E. yeahnern@jpeyh.com

昆山公司 KUNSHAN OFFICE

JPE Yean Hern Co.,Ltd. | 沅亨流體科技(昆山)有限公司

No. 128, Qianan Rd., Dianshanhu Town, Kunshan City 215345, Jiangsu

Province, China | 215345 江蘇省昆山市淀山湖鎮錢安路128號

T. +86-512-57489663 | F. +86-512-57489668

E. ksyh@jpeyh.com

張家港公司 ZHANGJIAGANG OFFICE

JPE Yean Hern Co.,Ltd. | 沅亨流體科技(張家港)有限公司

No.35, YueFeng Rd., Yangshe Town, Zhangjiagang City

215600, Jiangsu Province, China | 215600 江蘇省張家港市楊

舍鎮悅豐路35號

T. +86-512-58797921 | F. +86-512-58267839

E. monica.ding@jpeyh.com



QUICK COUPLINGS

快速接頭



NL 系列 (低壓單閥門類型) 07 NL SERIES FOR LOW PRESSURE, SINGLE VALVE TYPE

NL 氣壓快速接頭 07
PNEUMATIC COUPLINGS

YNL 單插式快速接頭 13
ONE TOUCH QUICK COUPLING

PU 管用螺帽式快速接頭 14
PU HOSE COUPLING

NL 多管路快速接頭 15
AIR DISTRIBUTOR



KS 系列 (中、低壓雙閥門類型) 17 KS SERIES FOR MIDDLE & LOW PRESSURE, TWIN VALVE TYPE



NS 系列 (平面式快速接頭) 21 NS SERIES FOR NON-SPILL FLAT FACE QUICK COUPLING

QC 系列 (中、低壓雙閥門類型) 25 QC SERIES FOR MIDDLE & LOW PRESSURE, TWIN VALVE TYPE



CL 系列 (雙扣式大流量快速接頭) 33 CL SERIES QUICK COUPLINGS FOR LOW PRESSURE



OPERATION OF JPE QUICK COUPLINGS

JPE 快速接頭操作建議

注意事項

NOTES

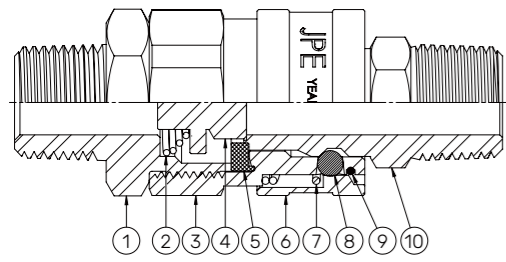
- 快速接頭上游建議先安裝使用過濾器
- 在斷開分離後的子體跟母體上使用保護器或防塵套
- 連接或斷開的過程中保持對準子體及母體
- 在常溫下連接或斷開快速接頭
- 應適當支撐或懸掛以防止側載
- 定期對母體 O 型密封圈添加潤滑劑
- Use filter ahead of quick couplings
- Use protectors or dust caps on disconnected sockets and plugs
- Align sockets and plugs when connecting or disconnecting
- Connect and disconnect the quick couplings at room temperature
- Support hanging hoses or other equipment to prevent side load.
- Lubricate socket seal O-rings periodically

警告

WARNING

- 連接或斷開快速接頭時有壓力額定限制, 請注意安全
- 在有壓力的情況下不要斷開暢通式快速接頭
- 連接時不要旋轉快速接頭
- 請不要在斷開的子體及母體插上無關的東西
- Pressure rating restrictions apply when connecting and disconnecting
- Do not disconnect full-flow quick couplings under pressure
- Do not rotate quick couplings while connected
- Do not insert foreign objects into disconnected sockets or plugs

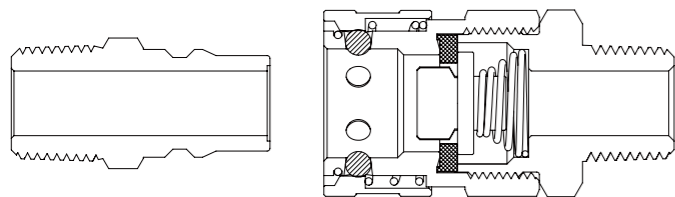
NL 氣壓快速接頭 PNEUMATIC COUPLINGS



項次 Item	零件名稱 Part Description
1	後套 Male Adapter
2	中心彈簧 Valve Spring
3	中心體 Socket Body
4	中心閥 Valve
5	密封墊片 Packing
6	外環 Sleeve
7	外環彈簧 Sleeve Spring
8	滾珠 Ball
9	C 扣 C Ring
10	子體 Plug

特性 FEATURES

- 母體中的閥門當子體插入時打開，當子體移開時關閉，在插入或移出子體時候就無需操作主閥門
- 母體和子體都適用於內螺紋、外螺紋或膠管連接，可以根據實際的需要選用不同的連接方式
- NL-20 系列的接頭在尺寸規格上是相同的，各型式也可以互換使用；NL-40 系列的接頭在尺寸規格上也是相同的，各型式也可以互換使用
- 材質有不鏽鋼、銅及鐵可供選擇
- 有多種型號可供選用，您可以根據實際操作環境的需要選擇最佳的型號
- The shutoff valve of the socket opens when the plug is inserted, and closes when the plug is removed
- Therefore, it is not necessary to operate the main valve when inserting or removing the plug
- Both sockets and plugs are available with female thread, male thread or hose shank connection which can be chosen according to actual need
- The NL-20 series are the same in size and specification. They can be used interchangeably; the NL-40 series are the same in size and specification. They can be used interchangeably
- Material: Stainless Steel, Brass, and Steel
- A variety of models to choose from, you can choose the best model according to the actual operating environment



材質特性 MATERIAL CHARACTERISTICS

尺寸 Size	NL-20				NL-40		
	1/8"	1/4"	3/8"	1/2"	1/2"	3/4"	1"
本體材質 (母體 & 子體) Material of Socket / Plug Body		不鏽鋼 304 / 鐵 (鍍鉻) CS / 銅 C3604 Stainless Steel 304 / Steel (Chrome plated) CS / Brass C3604					
連接方式 Connection Type	母體 SOCKET	外螺紋 (M) / 內螺紋 (F) / 膠管 (H) Male thread (M) / Female thread (F) / Hose shank (H)					
	子體 PLUG						
最大工作壓力 kgf/cm ² (psig) Max. Working Pressure in kgf/cm ² (psig)	不鏽鋼 STAINLESS STEEL	20(284)					
	鐵 STEEL	20(284)					
	銅 BRASS	15(213)					
密封圈材質 Packing Material		丁腈橡膠 (NBR) / 乙丙橡膠 (EPDM) / 氟素橡膠 (FKM)					
適用流體 Applicable Fluid	不鏽鋼 STAINLESS STEEL	空氣 / 水 / 油 Air / Water / Oil					
	鐵 STEEL	空氣 / 油 Air / Oil					
	銅 BRASS	空氣 / 水 / 油 Air / Water / Oil					
使用範圍 Application		氣壓工具、氣壓管、氣壓機械、水管等 Pneumatic tool, Pneumatic piping, Pneumatic machinery, Water piping, etc					

密封圈材料特性表 PACKING MATERIAL CHARACTERISTICS

- ◎ 推薦使用 Recommended
- 可使用 Useable
- △ 堪用但需視工作條件 Depends on working condition
- X 不推薦 Not Recommended

	高溫 Max Temperature (Celsius)	低溫 Min Temperature (Celsius)	耐礦物油性 Mineral Oil Resistant	耐燃料油性 Fuel Oil Resistant	耐矽油 Silicone Oil Resistant	耐水性 Water Resistant	耐氯 Chlorine Resistant	耐醇性 Alcohol Resistant	耐酸性 Acid Resistant	耐鹼性 Alkali Resistant	耐乙二醇 Ethylene Glycol(EG) Resistant	耐水蒸氣 Steam Resistant	耐電氣 絕緣性 Electrical Resistant
NBR	100	-25	◎	△	○	○	△	○	X	○	○	X	△
EPDM	120	-30	X	X	◎	◎	△	◎	◎	◎	◎	◎	△
FKM	200	-15	◎	◎	◎	◎	◎	△	◎	X	○	X	◎
FFKM	200	-20	◎	◎	◎	◎	◎	◎	◎	◎	◎	◎	◎

- 如有其他需求請洽 JPE 銷售代表
- FOR OTHER NEEDS, PLEASE CONTACT JPE SALES REPRESENTATIVE

說明

EXPLANATION

- | | |
|---|--|
| <ul style="list-style-type: none"> 當斷開時：
當母體的外環往母體方向移動，不鏽鋼珠自動向外滾動，子體被閥門的反作用力彈開，閥門就能自動關閉以阻止流體流動 當連接時：
將外環往母體方向推開，並插入子體後，閥門被打開，流體流動，外環被彈簧的力量推回到原來的位置，不鏽鋼珠鎖住以保證連接，裡面的密封圈能完全阻止流體的滲漏 | <ul style="list-style-type: none"> When disconnecting:
When the socket sleeve moves toward the socket, the stainless steel balls roll outward automatically, the plug is bounced open by the reaction force of the valve, and the valve can be automatically closed to prevent the fluid flow When connecting:
Push back the socket sleeve and insert the plug, the valve is opened, the fluid flows, the sleeve returns to the original position by the force of the spring, the stainless steel ball is locked to ensure the connection, and the inner packing can completely prevent leakage of fluid |
|---|--|

備註

REMARK

- | | |
|---|--|
| <ul style="list-style-type: none"> 由於這種快速接頭為單閥門設計，液體必需從母體流向子體 當接頭需要和有振動的機器或工具連接時，應在接頭與工具或機器之間安裝一條約 30cm 長的橡膠管 | <ul style="list-style-type: none"> Fluid must flow from the socket to the plug because of the single valve design When the quick coupling needs to be connected with a vibrating machine or tool, a rubber tube about 30cm long should be installed between the coupling and the tool or machine |
|---|--|

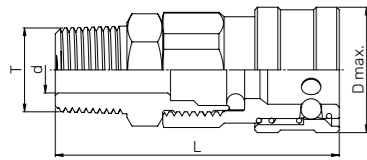
ORDERING INFORMATION 選型表

AS4 - 產品大類及材質 CLASSIFICATION & MATERIAL	21 螺紋尺寸 THREAD SIZE	膠管尺寸 HOSE SIZE	PM - 產品名稱 PRODUCT NAME	R 螺紋種類 THREAD TYPE
AS4:SS304 快速接頭 SS304 QUICK COUPLING	21:1/8" 22:1/4"	21:1/4" 22:5/16"	PM:子體外螺紋式 PLUG-MALE THREAD	R:BSPT 螺紋 BSPT THREAD
ABR:銅 快速接頭 BRASS C3604 QUICK COUPLING	23:3/8" 24:1/2"	23:3/8" 24:1/2"	PF:子體內螺紋式 PLUG-FEMALE THREAD	N:NPT 螺紋 NPT THREAD
AFE:鐵 快速接頭 STEEL QUICK COUPLING	44:1/2" 46:3/4" 48:1"	44:1/2" 46:3/4" 48:1"	PH:子體膠管式 PLUG-HOSE SHANK SM:母體外螺紋式 SOCKET-MALE THREAD	* 膠管連接無需填寫 *NULL FOR HOSE SHANK CONNECTION
			SF:母體內螺紋式 SOCKET-FEMALE THREAD	
			SH:母體膠管式 SOCKET-HOSE SHANK	
			YSM:單插式母體外螺紋 ONE TOUCH SOCKET-MALE THREAD	
			YSF:單插式母體內螺紋 ONE TOUCH SOCKET-FEMALE THREAD	
			YSH:單插式母體膠管式 ONE TOUCH SOCKET-HOSE SHANK	

NL 母體 SOCKET (S)

SM 型 Model SM

母體 - 外螺紋 Socket-Male Thread

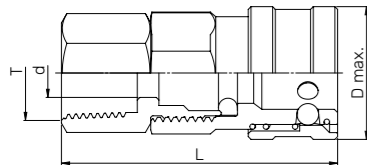


型號 Part NO.	外螺紋尺寸 Male Thread Size T (PT / NPT)	尺寸 Dimensions		
		L	D max.	d
21SM	1/8"	51.5	Ø25	Ø5
22SM	1/4"	54.5	Ø25	Ø7
23SM	3/8"	55.5	Ø25	Ø9
24SM	1/2"	58.5	Ø25	Ø9
44SM	1/2"	65	Ø35	Ø12
46SM	3/4"	67	Ø35	Ø18
48SM	1"	72	Ø35	Ø18

- 鐵製母體外環有滾花, NL-20 系列的外環外徑為 Ø25; NL-40 系列的外環外徑為 Ø35。
- Knurled sleeves for steel socket. The O.D. Size of NL-20 series sleeve is Ø25 and NL-40 series sleeve is Ø35.

SF 型 Model SF

母體 - 內螺紋 Socket-Female Thread

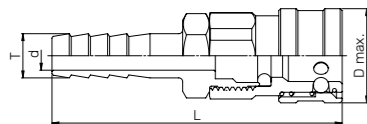


型號 Part NO.	內螺紋尺寸 Female Thread Size T (PT / NPT)	尺寸 Dimensions		
		L	D max.	d
21SF	1/8"	44.5	Ø25	Ø5
22SF	1/4"	50	Ø25	Ø7
23SF	3/8"	51	Ø25	Ø9
24SF	1/2"	54.5	Ø25	Ø9
44SF	1/2"	60	Ø35	Ø15
46SF	3/4"	60	Ø35	Ø15
48SF	1"	68	Ø35	Ø15

- 鐵製母體外環有滾花, NL-20 系列的外環外徑為 Ø25; NL-40 系列的外環外徑為 Ø35。
- Knurled sleeves for steel socket. The O.D. Size of NL-20 series sleeve is Ø25 and NL-40 series sleeve is Ø35.

SH 型 Model SH

母體 - 膠管 Socket-Hose Shank



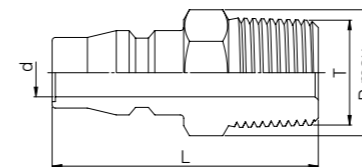
型號 Part NO.	膠管尺寸 Hose Size	尺寸 Dimensions			
		L	D max.	d	T
21SH	1/4"	70.5	Ø25	Ø4	Ø7.4
22SH	5/16"	71.5	Ø25	Ø5	Ø9.0
23SH	3/8"	75.5	Ø25	Ø7.5	Ø11.5
24SH	1/2"	75.5	Ø25	Ø9	Ø14.7
44SH	1/2"	82	Ø35	Ø9	Ø14.7
46SH	3/4"	88	Ø35	Ø15	Ø21.0
48SH	1"	94	Ø35	Ø17	Ø27.0

- 鐵製母體外環有滾花, NL-20 系列的外環外徑為 Ø25; NL-40 系列的外環外徑為 Ø35。
- Knurled sleeves for steel socket. The O.D. Size of NL-20 series sleeve is Ø25 and NL-40 series sleeve is Ø35.

NL 子體 PLUG (P)

PM 型 Model PM

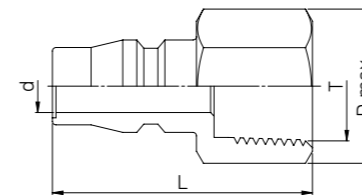
子體 - 外螺紋 Plug-Male Thread



型號 Part NO.	外螺紋尺寸 Male Thread Size T (PT / NPT)	尺寸 Dimensions		
		L	D max.	d
21PM	1/8"	36.5	H14	Ø7.5
22PM	1/4"	40	H14	Ø7.5
23PM	3/8"	41.5	H17	Ø7.5
24PM	1/2"	44.5	H21	Ø7.5
44PM	1/2"	48	H21	Ø12
46PM	3/4"	51.5	H27	Ø12
48PM	1"	55.5	H35	Ø12

PF 型 Model PF

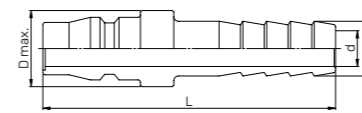
子體 - 內螺紋 Plug-Female Thread



型號 Part NO.	內螺紋尺寸 Female Thread Size T (PT / NPT)	尺寸 Dimensions		
		L	D max.	d
21PF	1/8"	33	H14	Ø7.5
22PF	1/4"	36	H17	Ø7.5
23PF	3/8"	37	H19	Ø7.5
24PF	1/2"	40	H24	Ø7.5
44PF	1/2"	45.5	H24	Ø12
46PF	3/4"	46	H30	Ø12
48PF	1"	51.5	H38	Ø12

PH 型 Model PH

子體 - 膠管 Plug-Hose Shank



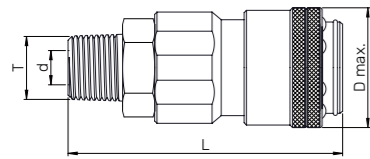
型號 Part NO.	膠管尺寸 Hose Size	尺寸 Dimensions			
		L	D max.	d	T
21PH	1/4"	56.5	Ø16	Ø7.5	Ø7.4
22PH	5/16"	57.5	Ø16	Ø7.5	Ø9
23PH	3/8"	61.5	Ø16	Ø7.5	Ø11.5
24PH	1/2"	61.5	Ø18	Ø7.5	Ø14.7
44PH	1/2"	65	Ø24	Ø9	Ø14.7
46PH	3/4"	71	Ø24	Ø12	Ø21
48PH	1"	79.5	Ø30	Ø12	Ø27

- 除非另有說明, 否則所有尺寸單位均為 mm
- 數值若是分數, 表示其單位是 inch.
- 上述尺寸僅供參考, 修改不另行通知
- All dimensions are in millimeters unless otherwise specified
- Fractional numbers mean inch size
- Dimensions shown are for reference only and subject to change

YNL 單插式快速接頭 ONE TOUCH QUICK COUPLINGS

YSM 型 Model YSM

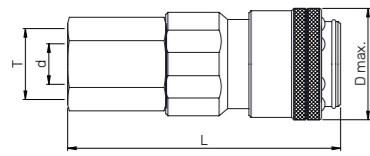
單插式母體 - 外螺紋
One Touch Socket-Male Thread



型號 Part NO.	外螺紋尺寸 Male Thread Size T (PT / NPT)	尺寸 Dimensions		
		L	D max.	d
21YSM	1/8"	54.5	Ø25	Ø4
22YSM	1/4"	55.5	Ø25	Ø7.5
23YSM	3/8"	57.5	Ø25	Ø7.5
24YSM	1/2"	59.5	Ø25	Ø9

YSF 型 Model YSF

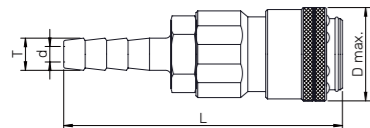
單插式母體 - 內螺紋
One Touch Socket-Female Thread



型號 Part NO.	內螺紋尺寸 Female Thread Size T (PT / NPT)	尺寸 Dimensions		
		L	D max.	d
21YSF	1/8"	52.5	Ø25	Ø7.5
22YSF	1/4"	52.5	Ø25	Ø7.5
23YSF	3/8"	54.5	Ø25	Ø7.5
24YSF	1/2"	54.5	Ø25	Ø9

YSH 型 Model YSH

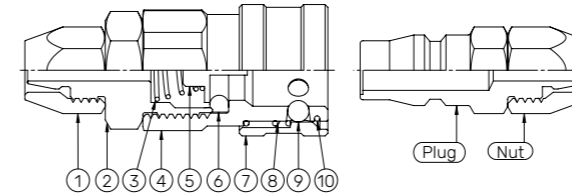
單插式母體 - 膠管
One Touch Socket-Hose Shank



型號 Part NO.	膠管尺寸 Hose Size	尺寸 Dimensions			
		L	D max.	d	T
21YSH	1/4"	72.5	Ø25	Ø4	Ø7.4
22YSH	5/16"	72.5	Ø25	Ø5	Ø9
23YSH	3/8"	76.5	Ø25	Ø7.5	Ø11.5
24YSH	1/2"	78.5	H26/30	Ø9	Ø14.7

- 除非另有說明, 否則所有尺寸單位均為 mm
- 數值若是分數, 表示其單位是 inch.
- 上述尺寸僅供參考, 修改不另行通知
- All dimensions are in millimeters unless otherwise specified
- Fractional numbers mean inch size
- Dimensions shown are for reference only and subject to change

NL PU 管用螺帽式快速接頭 PU HOSE COUPLINGS



項次
Item

項次 Item	零件名稱 Part Description
1	螺母 Nut
2	後套 Male Adapter
3	中心彈簧 Valve Spring
4	中心體 Socket Body
5	中心閥 Valve
6	密封墊片 Packing
7	外環 Sleeve
8	外環彈簧 Sleeve Spring
9	滾珠 Ball
10	C 扣 C Ring

ORDERING INFORMATION 選型表

AS4 -

產品大類及材質
CLASSIFICATION & MATERIAL

21

膠管尺寸 (內徑 * 外徑)
HOSE SIZE (I.D.*O.D.) (mm)

SA

產品名稱
PRODUCT NAME

AS4:SS304 快速接頭 SS304 QUICK COUPLING	20:4*6	SA:母體 - 螺帽式 SOCKET-NUT
AFE:鐵 快速接頭 STEEL QUICK COUPLING	21:5*8	SB:母體 - 螺帽式 SOCKET-NUT
	22:6.5*9.5	PA:子體 - 螺帽式 PLUG-NUT
	22:6.5*10	PB:子體 - 螺帽式 PLUG-NUT
	23:8*12	YSA:單插式母體 - 螺帽式 ONE TOUCH SOCKET-NUT
	23:9.5*12.7	YSB:單插式母體 - 螺帽式 ONE TOUCH SOCKET-NUT

規格

SPECIFICATIONS

型號 Part No.		膠管尺寸 Hose Size (mm)	
母體 Socket (S)	子體 Plug (P)	內徑 I.D.	外徑 O.D.
20SA	20PA	Ø4	Ø6
21SA	21PA	Ø5	Ø8
22SA	22PA	Ø6.5	Ø9.5
22SB	22PB	Ø6.5	Ø10
23SA	23PA	Ø8	Ø12
23SB	23PB	Ø9.5	Ø12.7

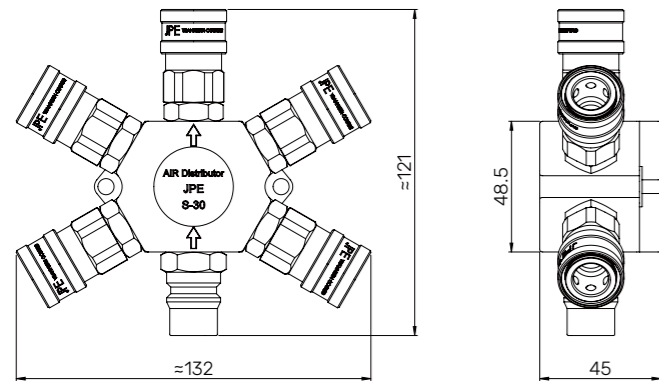
NL 多管路快速接頭 AIR DISTRIBUTORS

特性

FEATURES

- 應用於流體管道分支
- 接頭分支與 JPE NL / YNL 系列規格可互換使用
- 材質為不鏽鋼
- 特殊需求配氣塊可依客戶需求訂製
- Applied to fluid pipeline branch
- Branch connector are interchangeable with JPE NL / YNL series
- Material: Stainless Steel
- Customized manifold block for special needs

S-30 型 Model S-30



ORDERING INFORMATION 選型表

AS4 -

產品大類及材質

CLASSIFICATION & MATERIAL

S30

產品名稱

PRODUCT NAME

AS4:SS304 快速接頭

SS304 QUICK COUPLING

S30:S-30 TYPE 九六通

S-30 TYPE AIR DISTRIBUTOR

規格

SPECIFICATIONS

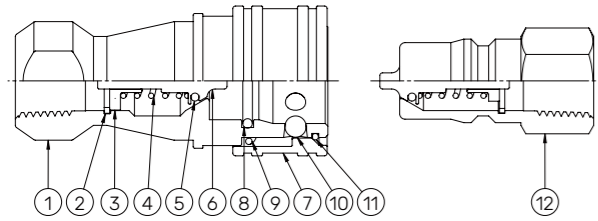
型號 Part NO.	快速接頭 Quick Couplings	
	進口 Inlet	出口 Outlet
S-30	43PM	22SM *5

- 鐵製母體外環有滾花, NL-20 系列的外環外徑為 $\varnothing 25$; NL-40 系列的外環外徑為 $\varnothing 35$ 。
- Knurled sleeves for steel socket. The O.D. Size of NL-20 series sleeve is $\varnothing 25$ and NL-40 series sleeve is $\varnothing 35$.

KS

中、低壓雙閥門類型

Middle & Low Pressure, Twin Valve Type



項次 Item	零件名稱 Part Description
1	本體 Socket Body
2	卡簧 Snap Ring
3	閥座 Valve Holder
4	中芯彈簧 Valve Spring
5	密封圈 O-ring
6	中芯閥 Valve
7	外環 Sleeve
8	密封圈 O-ring
9	外環彈簧 Sleeve Spring
10	滾珠 Ball
11	C 扣 C Ring
12	子體 Plug

特性

FEATURES

- 這種雙閥門快速接頭的母體與子體共同組成一個主閥，當母體與子體斷開時，各自密封
- 這種快速接頭採用了非常精確的機械技術，良好的密封性無論在子體與母體連接或斷開時都能獲得保證
- 當子體與母體連接時，通道打開；當子體與母體斷開時，通道關閉
- 標配 FKM 密封圈，另有其他材質密封圈可供選擇
- The socket and the plug of this twin valve quick coupling together form a main valve, when the socket and the plug are disconnected, they are sealed separately
- This quick coupling uses very precise mechanical technology, and superior sealing performance can be ensured whether the plug is connected or disconnected from the socket
- The passage opens while the socket and the plug are connected and closes while they are disconnected
- FKM packing as standard, and other materials as options

材質特性

MATERIAL CHARACTERISTICS

尺寸 Size	1/8"	1/4"	3/8"	1/2"	3/4"	1"	1-1/4"	1-1/2"	2"
本體材質 (母體 & 子體) Material of Socket / Plug Body	不鏽鋼 316L / 銅 C3604 Stainless Steel 316L / Brass C3604			不鏽鋼 304 / 銅 C3604 Stainless Steel 304 / Brass C3604					
連接方式 Connection Type	母體 SOCKET	內螺紋 (F) Female Thread (F)							
	子體 PLUG								
最大工作壓力 kgf/cm ² (psig) Max. Working Pressure in kgf/cm ² (psig)	銅 BRASS	50(711)		30(427)		20(285)		15(213)	
	不鏽鋼 STAINLESS STEEL	80(1138)		50(711)		30(427)		20(285)	
密封圈材質 Packing Material	丁腈橡膠 (NBR) / 乙丙橡膠 (EPDM) / 氟素橡膠 (FKM) / 全氟化橡膠 (FFKM)								
適用流體 Applicable Fluid	不鏽鋼 STAINLESS STEEL	酸性液體 / 鹼性液體 / 鹽水 Acidic fluid / Alkaline fluid / Brine							
	銅 BRASS	汽油 / 重油 / 煤油 / 水 / 蒸氣 Gasoline / Heavy oil / Kerosene / Water / Steam							
使用範圍 Application	水管、海水管道、氧氣管、乙炔管、氣體管道、化工機械、高壓氣體管道 Water piping, Sea-water piping, Oxygen piping, Acetylene piping, Air piping, Chemical plant, High pressure gas piping								

密封圈材料特性表

PACKING MATERIAL CHARACTERISTICS

- ◎ 推薦使用 Recommended
- 可使用 Useable
- △ 堪用但需視工作條件 Depends on working condition
- X 不推薦 Not Recommended

	高溫 Max Temperature (Celsius)	低溫 Min Temperture (Celsius)	耐礦物油性 Mineral Oil Resistant	耐燃料油性 Feul Oil Resistant	耐矽油 Silicone Oil Resistant	耐水性 Water Resistant	耐氯 Chlorine Resistant	耐醇性 Alcohol Resistant	耐酸性 Acid Resistant	耐鹼性 Alkali Resistant	耐乙二醇 Ethylene Glycol(EG) Resistant	耐水蒸氣 Steam Resistant	耐電氣 絕緣性 Electrical Resistant
NBR	100	-25	◎	△	○	○	△	○	X	○	○	X	△
EPDM	120	-30	X	X	◎	◎	△	◎	◎	◎	◎	◎	△
FKM	200	-15	◎	◎	◎	◎	◎	△	◎	X	○	X	◎
FFKM	200	-20	◎	◎	◎	◎	◎	◎	◎	◎	◎	◎	◎

- 如有其他需求請洽 JPE 銷售代表
- FOR OTHER NEEDS, PLEASE CONTACT JPE SALES REPRESENTATIVE

說明

EXPLANATION

- 當斷開時：
當母體的外環往母體方向移動，不鏽鋼珠自動向外滾動，子體在母體與子體共同閥門彈簧力的作用下被斷開，此時子體與母體各自的閥門閉合，以組止流體流動
- 當連接時：
將外環往母體方向推開，並插入子體後，外環在彈簧的作用下回到原來位置，不鏽鋼珠鎖緊並確保連接，同時，母體與子體的閥門互相推動使閥門打開，O 型圈能完全防止流體洩漏
- When disconnecting:
When the socket sleeve moves toward the socket, the stainless steel balls roll outward automatically, the plug is bounced open by the spring force of the twin valves, and both valves can be automatically closed to prevent the fluid flow
- When connecting:
Push back the socket sleeve and insert the plug, the sleeve returns to the original position by the force of the spring, the stainless steel ball is locked to ensure the connection, and the inner packing can completely prevent leakage of fluid. At the same time, the valves of the socket and the plug push each other to open the valve, and the O-ring can completely prevent fluid leakage

備註

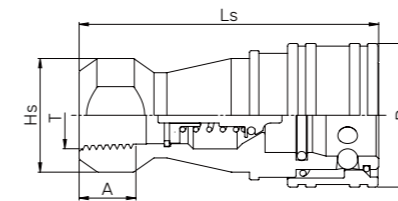
REMARK

- 耐化學腐蝕性取決於 O 型圈和閥門墊圈的材質，因此應根據流體選擇合適的 O 型圈與閥門墊圈
- 只有當母體與子體口徑一樣時，才能被對接
- 如果要和管接頭或內螺紋接頭配套時，應選擇合適的接頭
- Chemical resistance depends on the material of O-ring and valve packing. Select the appropriate O-ring and valve packing according to the fluid
- Sockets can be connected with plugs only when their nominal diameters are the same
- To connect with hose shank or female thread, choose an appropriate connection type

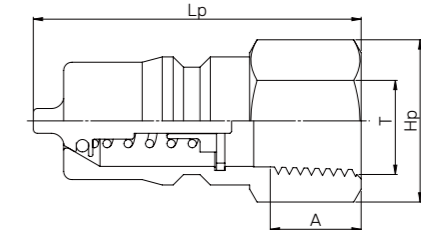
ORDERING INFORMATION 選型表

AS6 - 產品大類及材質 CLASSIFICATION & MATERIAL	KSS 產品名稱 PRODUCT NAME	01 螺紋尺寸 THREAD SIZE	N 螺紋種類 THREAD TYPE	(V) 密封圈材質 PACKING MATERIAL
AS6:SS316L 快速接頭 SS316L QUICK COUPLING	KSP:KS 系列子體 KS PLUG	01:1/8"	R:BSPT 螺紋 BSPT THREAD	V:氟素橡膠 FKM
AS4:SS304 快速接頭 SS304 QUICK COUPLING	KSS:KS 系列母體 KS SOCKET	02:1/4"	N:NPT 螺紋 NPT THREAD	EP:乙丙橡膠 EPDM
ABR:銅 快速接頭 BRASS QUICK COUPLING		03:3/8"		N:丁腈橡膠 NBR
		04:1/2"		F:全氟化橡膠 FFKM
		06:3/4"		
		08:1"		
		012:1-1/4"		
		014:1-1/2"		
		016:2"		

KS 母體 SOCKET (S)



KS 子體 PLUG (P)



內螺紋尺寸 Female Thread Size T (PT / NPT)	母體 Socket					子體 Plug			
	型號 Part NO.	尺寸 Dimensions				型號 Part NO.	尺寸 Dimensions		
		Ls	D	A	Hs		Lp	A	Hp
1/8"	KSS01	48	24	11	Face14*R18	KSP01	29	11	H14
1/4"	KSS02	58	27.5	13	Face19*R22	KSP02	36	13	H17
3/8"	KSS03	65	34.5	13	Face22*R25	KSP03	40	13	H21
1/2"	KSS04	72	44	15	Face29*R31.5	KSP04	44	15	H27
3/4"	KSS06	90	54.5	17	Face35*R39	KSP06	54	17	H35
1"	KSS08	102	64	20	Face41*R48	KSP08	62	20	H41
1-1/4"	KSS012	112	77.5	24	Face54*R59	KSP012	70	24	Face54*R59.5
1-1/2"	KSS014	124	88	24	Face63*R69	KSP014	75	24	Face63*R69
2"	KSS016	132	100	27	Face70*R80	KSP016	84	27	Face70*R79.5

- 除非另有說明，否則所有尺寸單位均為 mm
- 數值若是分數，表示其單位是 inch.
- 上述尺寸僅供參考，修改不另行通知

- All dimensions are in millimeters unless otherwise specified
- Fractional numbers mean inch size
- Dimensions shown are for reference only and subject to change

NS 平面式快速接頭 NON-SPILL FLAT FACE QUICK COUPLING

特性

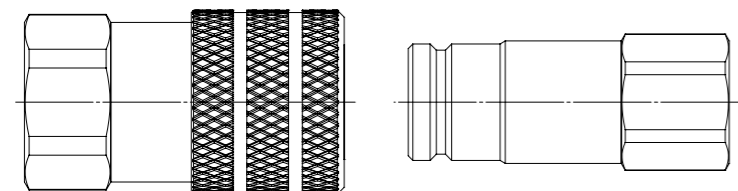
FEATURES

- 簡易的操作：當子體和母體連結時，通道暢通；當子體和母體斷開時，子母體各自帶閥門截止
- 平面式的接口設計可消除子母體斷開時流體的滲出與防止子母體連結時空氣推入系統
- 優越的鎖緊滾球設計提高使用安全可靠度：數顆鎖緊滾球平均施力並更易於操作；在系統帶壓下，閥體連接時可允許子母體間少量的轉動
- 平面式快速接頭 NS 系列有優越流量與較小的壓降表現
- 本體標準材質 SS316L 與 FKM 的密封圈（其他材質需求請洽銷售人員諮詢）
- 多種密封圈材質可以選擇
- Quick and easy operation: when the socket and plug are disconnected, both the socket and plug side are completely sealed.
- Flush face valve design, minimize the spillage during disconnecting and the air inclusion during connecting.
- With locking ball design, the workload can be averaged out; during operation (under pressure) it also allows some rotation between socket and plug.
- NS series has better flow rate and minimum pressure loss.
- Standard body material is in SS316L and FKM for seal material (other material available).
- Various seal material is available by request.

產品應用

PRODUCT APPLICATION

- JPE NS 系列的快速接頭可消除子母體斷開時流體的損失與子母體連結時空氣含量
- 有效防止介質滲漏造成操作安全疑慮的應用
- NS 系列快速接頭具有雙閥門平面式接頭，設計應用於介質不能洩漏的應用環境如：化學品製程、化學品配送、食品製程或是其他腐蝕性氣體應用
- 工作壓力可達 2000 PSIG@RT
- JPE NS series can minimize the spillage during disconnecting and air during connecting.
- NS is suitable for the application requires non-spillage during operating, which might raise safety concern.
- With dual valve flush face coupling, NS is ideal for the application where requires non-spillage during the operation; such as production & transportation of chemical products, food & beverage, and corrosive medium.
- Working pressures to 2000 psig. at room temperature



零件材質

MATERIALS

本體 Body	不鏽鋼 316L SS316L
彈簧 Springs	不鏽鋼 304 SS304
鎖位鋼珠 Locking Balls	不鏽鋼 304 SS304
背托環 Backup Washers	聚四氟乙烯 PTFE
密封圈 Packing Material	丁腈橡膠 (NBR) / 乙丙橡膠 (EPDM) / 氟素橡膠 (FKM) / 全氟化橡膠 (FFKM)

規格

SPECIFICATIONS

尺寸 SIZE		3/8"	1/2"
連接方式 Connection Method	母體 / 子體 Socket/Plug	內螺紋 Female Thread (F)	
最大工作壓力 kgf/cm ² (psig) Max. Working Pressure in kgf/cm ² (psig)		140(2000)	
最大洩漏量 (子母體分開時) Spillage (Max. per disconnect)		0.015ml	0.02ml
最大空氣含量 (子母體連結時) Air Inclusion (Max. per connect)		0.02ml	0.07ml

密封圈材料特性表

PACKING MATERIAL CHARACTERISTICS

- ◎ 推薦使用 Recommended
- 可使用 Useable
- △ 堪用但需視工作條件 Depends on working condition
- X 不推薦 Not Recommended

	高溫 Max Temperature (Celsius)	低溫 Min Temperature (Celsius)	耐礦物油性 Mineral Oil Resistant	耐燃料油性 Fuel Oil Resistant	耐矽油 Silicone Oil Resistant	耐水性 Water Resistant	耐氯 Chlorine Resistant	耐醇性 Alcohol Resistant	耐酸性 Acid Resistant	耐鹼性 Alkali Resistant	耐乙二醇 Ethylene Glycol(EG) Resistant	耐水蒸氣 Steam Resistant	耐電氣 絕緣性 Electrical Resistant
NBR	100	-25	◎	△	○	○	△	○	X	○	○	X	△
EPDM	120	-30	X	X	◎	◎	△	◎	◎	◎	◎	◎	△
FKM	200	-15	◎	◎	◎	◎	◎	△	◎	X	○	X	◎
FFKM	250	-20	◎	◎	◎	◎	◎	◎	◎	◎	◎	◎	◎

- 如有其他需求請洽 JPE 銷售代表
- FOR OTHER NEEDS, PLEASE CONTACT JPE SALES REPRESENTATIVE

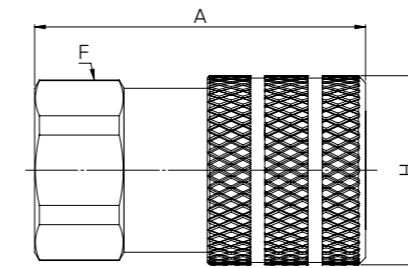
ORDERING INFORMATION 選型表

AS6 - 產品大類及材質 CLASSIFICATION AND MATERIAL	NSP 產品名稱 PRODUCT NAME	04 尺寸 (英制) SIZE (FRACTIONAL)	F 連接方式 CONNECTION TYPE	N 螺紋種類 THREAD TYPE	(V) 密封圈材質 PACKING MATERIAL
AS6:SS316L 快速接頭 SS316L QUICK COUPLING	NSP: NS 系列子體 NS PLUG	03: 3/8"	F: 內螺紋 FEMALE THREAD	N: NPT 螺紋 NPT THREAD	V: 氟素橡膠 FKM
	NSS: NS 系列母體 NS SOCKET	04: 1/2"		R: PT 螺紋 PT THREAD	EP: 乙丙橡膠 EPDM
					N: 丁腈橡膠 NBR
					F: 全氟化橡膠 FFKM

- 只有當母體與子體口徑一樣時, 才能被對接
- Sockets can be connected with plugs only when their nominal diameters are the same.

NS
母體
SOCKET (S)

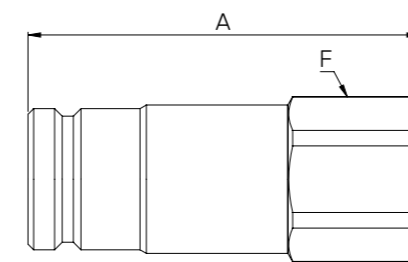
母體 - 內螺紋
Socket-Female Thread



型號 Part NO.	接口尺寸 Port Size	尺寸 Dimensions		
		A	H	F (HEX)
NSS03F	3/8"	64	33	27
NSS04F	1/2"	70.5	40	35

NS
子體
PLUG (P)

子體 - 內螺紋
Plug-Female Thread



型號 Part NO.	接口尺寸 Port Size	尺寸 Dimensions	
		A	F (HEX)
NSP03F	3/8"	59	24
NSP04F	1/2"	70	27

QC 中、低壓雙閥門類型

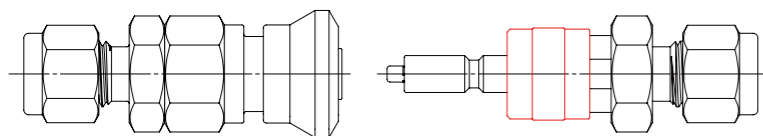
MIDDLE & LOW PRESSURE, TWIN VALVE TYPE

特性 FEATURES

- 小流量設計,外觀輕巧
- 這種雙閥門快速接頭的母體與子體共同組成一個主閥,當母體與子體斷開時,各自密封
- 當子體與母體連接時,通道打開;當子體與母體斷開時,通道關閉
- 結實的母體外環可保護與子體的接口端;母體的大面積鎖定裝置夾住子體管柄,增加穩定性
- 有各式接口可供選擇,尺寸範圍 6-12mm 及 1/8"-1/2"。可依實際使用情況來選擇最合適的產品
- 以推入的方式來連接,操作簡單便利;要斷開母體與子體時,只需將母體外環往子體方向推動
- 標配 FKM 密封圈,另有其他材質密封圈可供選擇
- Small flow and compact design.
- The socket and the plug of this twin valve quick coupling together form a main valve, when the socket and the plug are disconnected, they are sealed separately
- The passage opens while the socket and the plug are connected and closes while they are disconnected
- Heavy-duty socket sleeve shields its connection end for the plug. Large area locking device clamps the stem of the plug adding stability
- Various connections as option; Size:6-12 mm and 1/8"-1/2". You can choose the best model according to the actual working condition
- Push-in connecting design enables quick and easy operation. To disconnect the socket and the plug, simply pull the socket sleeve toward the plug
- FKM packing as standard, and other materials as options

備註 REMARK

- 只有當母體與子體口徑一樣時,才能被對接
- 快速接頭未使用時,另有選配件子母體保護器可防止髒污進入。
- Sockets can be connected with plugs only when their nominal diameters are the same
- When QC series quick coupling is not in use, optional socket plug protector can be applied to prevent dirt from entering.



材質特性 MATERIAL CHARACTERISTICS

尺寸 Size	1/8"、1/4"、6mm、8mm	3/8"、10mm	1/2"、12mm
本體材質 (母體 & 子體) Material of Socket / Plug Body	不鏽鋼 316L Stainless Steel 316L		
連接方式 Connection Type	母體 SOCKET	內螺紋 / 外螺紋 / 卡套 / 穿板卡套 Female Thread / Male Thread / JPE Tube End / Bulkhead Tube End	
	子體 PLUG		
最大工作壓力 kgf/cm ² (psig) Max. Working Pressure in kgf/cm ² (psig)	210(3000)	105(1500)	53(750)
斷開及連接壓力額定值 kgf/cm ² (psig) Disconnected and When Connecting and Disconnecting	14(200)		
密封圈材質 Packing Material	丁腈橡膠 (NBR) / 乙丙橡膠 (EPDM) / 氟素橡膠 (FKM) / 全氟化橡膠 (FFKM)		
適用流體 Applicable Fluid	氣態介質:氧 / 氮 / 氬 / 壓縮空氣 Gaseous:Oxygen / Nitrogen / Argon / Compressed air 液態介質:水 / 油 Liquid:Water / Oil		

密封圈材料特性表 PACKING MATERIAL CHARACTERISTICS

- ◎ 推薦使用 Recommended
- 可使用 Useable
- △ 堪用但需視工作條件 Depends on working condition
- X 不推薦 Not Recommended

	高溫 Max Temperature (Celsius)	低溫 Min Temperature (Celsius)	耐礦物油性 Mineral Oil Resistant	耐燃料油性 Fuel Oil Resistant	耐矽油 Silicone Oil Resistant	耐水性 Water Resistant	耐氯 Chlorine Resistant	耐醇性 Alcohol Resistant	耐酸性 Acid Resistant	耐鹼性 Alkali Resistant	耐乙二醇 Ethylene Glycol(EG) Resistant	耐水蒸氣 Steam Resistant	耐電氣絕緣性 Electrical Resistant
NBR	100	-25	◎	△	○	○	△	○	X	○	○	X	△
EPDM	120	-30	X	X	◎	◎	△	◎	◎	◎	◎	◎	△
FKM	200	-15	◎	◎	◎	◎	◎	△	◎	X	○	X	◎
FFKM	200	-20	◎	◎	◎	◎	◎	◎	◎	◎	◎	◎	◎

- 如有其他需求請洽 JPE 銷售代表
- FOR OTHER NEEDS, PLEASE CONTACT JPE SALES REPRESENTATIVE

ORDERING INFORMATION 選型表

AS6 -	QCP	02	F -	N	(V)	
產品大類及材質 CLASSIFICATION & MATERIAL	產品名稱 PRODUCT NAME	尺寸 (英制) SIZE (FRACTIONAL)	尺寸 (公制) SIZE (MERTIC)	連接方式 CONNECTION TYPE	螺紋種類 THREAD TYPE	密封圈材質 PACKING MATERIAL
AS6:SS316L 快速接頭 SS316L QUICK COUPLING	QCP:QC 系列子體 QC PLUG	01:1/8"	6:6mm	J:卡套式 JPE TUBE END	R:BSPT 螺紋 BSPT THREAD	V:氟素橡膠 FKM
	QCS:QC 系列母體 QC SOCKET	02:1/4"	8:8mm	M:外螺紋 MALE THREAD	N:NPT 螺紋 NPT THREAD	EP:乙丙橡膠 EPDM
	QCBP: QC 系列子體, 帶隔板 QC BULKHEAD PLUG	03:3/8"	10:10mm	F:內螺紋 FEMALE THREAD	* 卡套式連接無需填寫 *NULL FOR JPE TUBE END CONNECTION	N:丁腈橡膠 NBR
	QCBS: QC 系列母體, 帶隔板 QC BULKHEAD SOCKET	04:1/2"	12:12mm			F:全氟化橡膠 FFKM

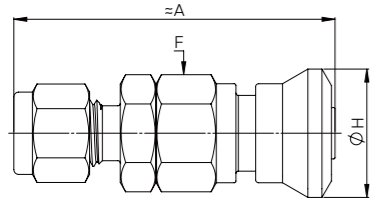
ACCESSORIES: QC PROTECTORS 選配件 - 保護器

AS6 -	QCP	02-	PTT
產品大類及材質 CLASSIFICATION & MATERIAL	產品名稱 PRODUCT NAME	適用尺寸 (英制 & 公制) SIZE (FRACTIONAL)	產品名稱 PRODUCT NAME
AS6:SS316L 快速接頭 SS316L QUICK COUPLING	QCP:QC 系列子體 QC PLUG	02:1/8"、1/4"、6mm、8mm	PTT:保護器 PROTECTOR
	QCS:QC 系列母體 QC SOCKET	03:3/8"、10mm	
		04:1/2"、12mm	

QC 母體 SOCKET (S)

母體 - 卡套式

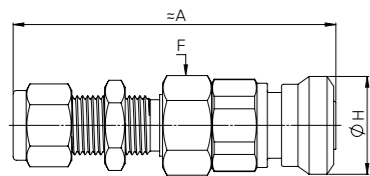
Socket-JPE Tube End



型號 Part NO.	接口尺寸 Port Size	尺寸 Dimensions			
		系列 SERIES	A	H	F (HEX)
QCS6J	6mm	QC02	53.5	21.5	17
QCS8J	8mm	QC02	54	21.5	17
QCS10J	10mm	QC03	62.2	23.8	21
QCS12J	12mm	QC04	75	29.5	24
QCS01J	1/8"	QC02	52	21.5	17
QCS02J	1/4"	QC02	54	21.5	17
QCS03J	3/8"	QC03	62	23.8	21
QCS04J	1/2"	QC04	75	29.5	24

母體 - 穿板卡套式

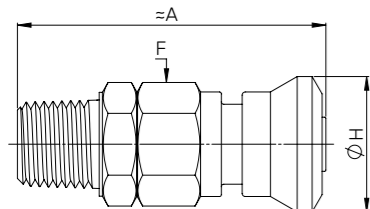
Socket-Bulkhead Tube End



型號 Part NO.	接口尺寸 Port Size	尺寸 Dimensions			
		系列 SERIES	A	H	F (HEX)
QCBS6J	6mm	QC02	70.5	21.5	17
QCBS8J	8mm	QC02	72	21.5	19
QCBS10J	10mm	QC03	79.2	23.8	21
QCBS12J	12mm	QC04	94.2	29.5	24
QCBS01J	1/8"	QC02	68.3	21.5	17
QCBS02J	1/4"	QC02	70.8	21.5	17
QCBS03J	3/8"	QC03	78.5	23.8	21
QCBS04J	1/2"	QC04	94.2	29.5	24

母體 - 外螺紋

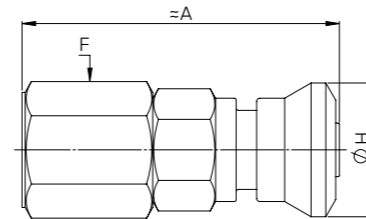
Socket-Male Thread



型號 Part NO.	接口尺寸 Port Size	尺寸 Dimensions			
		系列 SERIES	A	H	F (HEX)
QCS02M	1/4"	QC02	49	21.5	17
QCS0203M	3/8"	QC02	50	21.5	17
QCS0302M	1/4"	QC03	55.2	23.8	21
QCS03M	3/8"	QC03	56.2	23.8	21
QCS04M	1/2"	QC04	67.7	29.5	24

母體 - 內螺紋

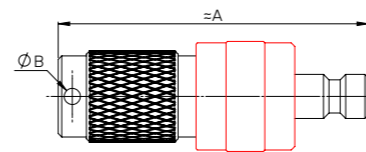
Socket-Female Thread



型號 Part NO.	接口尺寸 Port Size	尺寸 Dimensions			
		系列 SERIES	A	H	F (HEX)
QCS02F	1/4"	QC02	51	21.5	21.5
QCS03F	3/8"	QC03	54.2	23.8	23.8
QCS04F	1/2"	QC04	69.3	29.5	29.5

母體保護器

Socket Protector

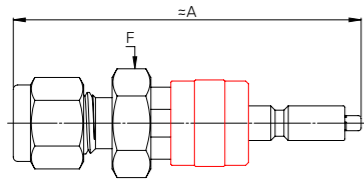


型號 Part NO.	尺寸 Dimensions		
	系列 SERIES	A	B
QCS02PTT	QC02	44	2.3
QCS03PTT	QC03	48.1	3
QCS04PTT	QC04	53.6	3

- 除非另有說明, 否則所有尺寸單位均為 mm
- 數值若是分數, 表示其單位是 inch.
- 上述尺寸僅供參考, 修改不另行通知
- All dimensions are in millimeters unless otherwise specified
- Fractional numbers mean inch size
- Dimensions shown are for reference only and subject to change

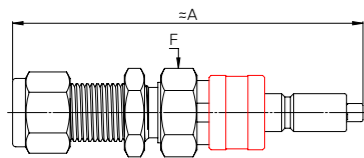
QC 子體 PLUG (P)

子體 - 卡套式 Plug-JPE Tube End



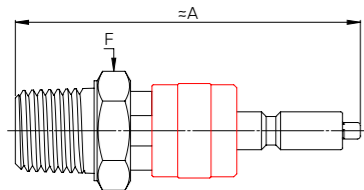
型號 Part NO.	接口尺寸 Port Size	尺寸 Dimensions		
		系列 SERIES	A	F (HEX)
QCP6J	6mm	QC02	62.5	17
QCP8J	8mm	QC02	63	17
QCP10J	10mm	QC03	70.5	19
QCP12J	12mm	QC04	83	24
QCP01J	1/8"	QC02	60.5	17
QCP02J	1/4"	QC02	63	17
QCP03J	3/8"	QC03	70	19
QCP04J	1/2"	QC04	83	24

子體 - 穿板卡套式 Plug-Bulkhead Tube End



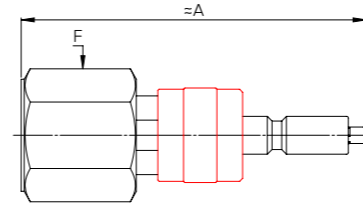
型號 Part NO.	接口尺寸 Port Size	尺寸 Dimensions		
		系列 SERIES	A	F (HEX)
QCBP6J	6mm	QC02	78.5	17
QCBP8J	8mm	QC02	80	19
QCBP10J	10mm	QC03	87	22
QCBP12J	12mm	QC04	102	24
QCBP01J	1/8"	QC02	76.5	17
QCBP02J	1/4"	QC02	78.5	17
QCBP03J	3/8"	QC03	87	19
QCBP04J	1/2"	QC04	102	24

子體 - 外螺紋 Plug-Male Thread



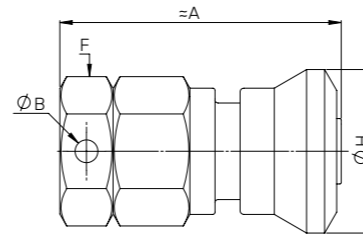
型號 Part NO.	接口尺寸 Port Size	尺寸 Dimensions		
		系列 SERIES	A	F (HEX)
QCP02M	1/4"	QC02	57	17
QCP03M	3/8"	QC03	63	19
QCP04M	1/2"	QC04	76.8	24

子體 - 內螺紋 Plug-Female Thread



型號 Part NO.	接口尺寸 Port Size	尺寸 Dimensions		
		系列 SERIES	A	F (HEX)
QCP02F	1/4"	QC02	57	19
QCP03F	3/8"	QC03	65	22
QCP04F	1/2"	QC04	77	27

子體保護器 Plug Protector



型號 Part NO.	尺寸 Dimensions				
	系列 SERIES	A	B	H	F (HEX)
QCP02PTT	QC02	37	3	21.5	17
QCP03PTT	QC03	39.2	3	23.8	21
QCP04PTT	QC04	48.2	3	29.5	24

- 除非另有說明, 否則所有尺寸單位均為 mm
- 數值若是分數, 表示其單位是 inch.
- 上述尺寸僅供參考, 修改不另行通知
- All dimensions are in millimeters unless otherwise specified
- Fractional numbers mean inch size
- Dimensions shown are for reference only and subject to change

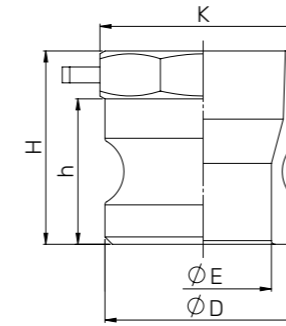
CL 雙扣式大流量快速接頭 LOW PRESSURE

ORDERING INFORMATION 選型表

AS6 - 產品大類及材質 CLASSIFICATION & MATERIAL	A 產品名稱 PRODUCT NAME	050 - 螺紋尺寸 THREAD SIZE	R 螺紋種類 THREAD TYPE
AS6:SS316 快速接頭 SS316 QUICK COUPLING	A:有耳快接子體 - 內螺紋 MALE ADAPTER-FEMALE THREAD	050:1/2"	R:BSPT 螺紋 BSPT THREAD
AS4:SS304 快速接頭 SS304 QUICK COUPLING	F:有耳快接子體 - 外螺紋 MALE ADAPTER-MALE THREAD	075:3/4"	N:NPT 螺紋 NPT THREAD
	E:有耳快接子體 - 膠管 MALE ADAPTER-HOSE SHANK	100:1"	* 膠管及塞頭型式無需填寫 *NULL FOR HOSE SHANK AND DUST CAP / PLUG CONNECTION
	DP:有耳快接子體 - 塞頭 MALE ADAPTER-DUST PLUG	125:1-1/4"	
	B:有耳快接母體 - 外螺紋 FEMALE COUPLER-MALE THREAD	150:1-1/2"	
	C:有耳快接母體 - 膠管 FEMALE COUPLER-HOSE SHANK	200:2"	
	D:有耳快接母體 - 內螺紋 FEMALE COUPLER-FEMALE THREAD	250:2-1/2"	
	DC:有耳快接母體 - 塞頭 FEMALE COUPLER-DUST CAP	300:3"	
		400:4"	
		500:5"	
		600:6"	

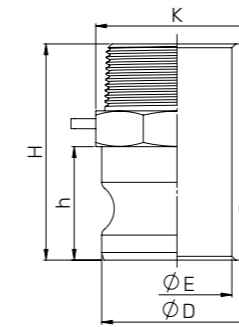
CL 子體 MALE ADAPTER

A 型 Model A 子體 - 內螺紋 Male Adapter-Female Thread



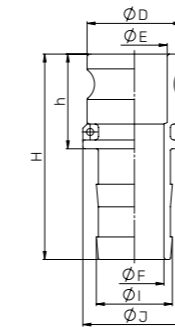
型號 Part NO.	A050	A075	A100	A125	A150	A200	A250	A300	A400	A500	A600
尺寸 Size	1/2"	3/4"	1"	1-1/4"	1-1/2"	2"	2-1/2"	3"	4"	5"	6"
D	24.1	32	36.7	45.5	53.4	63	75.8	91.5	119.5	146.6	175.9
E	13.5	21.2	23.6	28.4	37.1	46.2	56.5	73.5	100.8	122.3	154.8
K	21	26.4	33.2	41.9	47.8	59.6	75.2	87.9	113	138.4	163.8
h	26.4	27.7	34	42.9	40.1	47.2	49.4	51.5	52.5	53.8	56.4
H	40.5	39.7	49	55.2	55.6	63	79.7	73	77.8	79.5	82

F 型 Model F 子體 - 外螺紋 Male Adapter-Male Thread



型號 Part NO.	F050	F075	F100	F125	F150	F200	F250	F300	F400	F500	F600
尺寸 Size	1/2"	3/4"	1"	1-1/4"	1-1/2"	2"	2-1/2"	3"	4"	5"	6"
D	24.1	32	36.7	45.5	53.4	63	75.8	91.5	119.5	146.6	175.9
E	13.5	19.1	24	28.6	37.5	47	56.3	74.3	102	126.6	154.5
K	25.2	32.8	41.1	49.8	57.5	68.2	82.8	95.7	124	148.2	178
h	26.2	28	32.9	42.3	41.5	47.3	48.9	51	54.7	51.6	56.5
H	50.3	59.4	69.5	79.6	79	90.8	99	104.2	110.7	109.2	117

E 型 Model E 子體 - 膠管 Male Adapter-Hose Shank



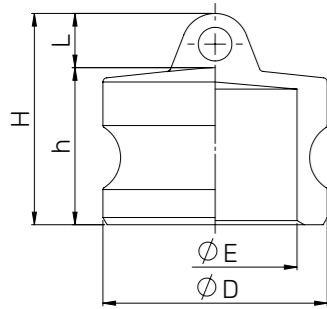
型號 Part NO.	E050	E075	E100	E125	E150	E200	E250	E300	E400	E500	E600
尺寸 Size	1/2"	3/4"	1"	1-1/4"	1-1/2"	2"	2-1/2"	3"	4"	5"	6"
D	24.1	32	36.7	45.5	53.4	63	75.8	91.5	119.5	146.6	175.9
E	13.5	21	23.5	28.6	37.1	46.5	57.8	74.4	102.2	125	152.8
F	8	14.5	20.2	26.8	33.4	44.8	55.5	69.4	95	119.1	142.3
I	9.5	20.8	27	33.8	40.7	53.3	66.5	78.9	105	130	155.3
J	21.5	33	41	48.2	58.2	70.1	80.4	103.1	129.4	146.3	173.4
h	43	38.2	47.8	50.7	53.5	59.2	61.8	65.4	66.8	64.3	70
H	88	91.2	108.5	112.5	116	133.1	140.1	166.5	176.1	188.4	213.4

• 除非另有說明, 否則所有尺寸單位均為 mm
• 數值若是分數, 表示其單位是 inch.
• 上述尺寸僅供參考, 修改不另行通知

• All dimensions are in millimeters unless otherwise specified
• Fractional numbers mean inch size
• Dimensions shown are for reference only and subject to change

CL 子體 MALE ADAPTER

DP 型 Model DP
子體 - 塞頭
Male Adapter-Dust Plug

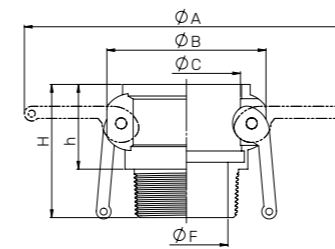


型號 Part NO.	DP050	DP075	DP100	DP125	DP150	DP200	DP250	DP300	DP400	DP500	DP600
尺寸 Size	1/2"	3/4"	1"	1-1/4"	1-1/2"	2"	2-1/2"	3"	4"	5"	6"
D	24.1	32	36.7	45.5	53.4	63	75.8	91.5	119.5	146.6	175.9
E	14.2	21	26.7	31.6	39	48.3	60.6	75.5	103.4	125.3	152
K	10.8	10.8	10.4	10.2	14.2	12.3	13.3	13.7	14	13.3	15.1
h	30.5	26.6	32	39.3	37.7	45	49.8	49.7	52.2	47.8	56
H	41.3	37.4	42.4	49.5	51.9	57.3	63.1	63.4	66.2	61.1	71.1

- 除非另有說明, 否則所有尺寸單位均為 mm
- 數值若是分數, 表示其單位是 inch.
- 上述尺寸僅供參考, 修改不另行通知
- All dimensions are in millimeters unless otherwise specified
- Fractional numbers mean inch size
- Dimensions shown are for reference only and subject to change

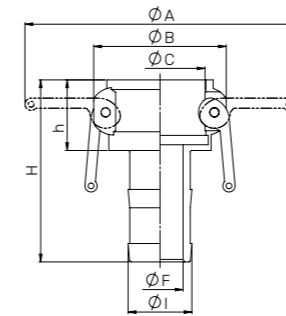
CL 母體 FEMALE COUPLER

B 型 Model B
母體 - 外螺紋
Female Coupler-Male Thread



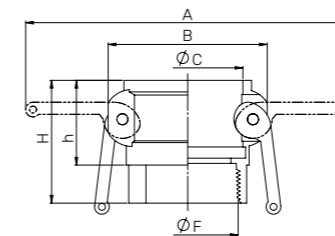
型號 Part NO.	B050	B075	B100	B125	B150	B200	B250	B300	B400	B500	B600
尺寸 Size	1/2"	3/4"	1"	1-1/4"	1-1/2"	2"	2-1/2"	3"	4"	5"	6"
A	99	110	125	177	188	197	210	248	280	306	595
B	44	52	60	80	87	97	110	133	165	190	254
C	24.9	32.4	37.2	46	54	63.7	76.5	92.2	120.2	145.7	176.5
F	15.2	19.4	26.2	34.2	39.7	51.3	66.8	78.3	103.6	124.8	151.3
h	31.1	32.6	38.2	43.8	44.5	51.3	53	54.4	55.5	58.8	62
H	47.3	51.9	59.7	68.1	69.3	75.9	83.4	88.3	91.4	95.6	100.4

C 型 Model C
母體 - 膠管
Female Coupler-Hose Shank



型號 Part NO.	C050	C075	C100	C125	C150	C200	C250	C300	C400	C500	C600
尺寸 Size	1/2"	3/4"	1"	1-1/4"	1-1/2"	2"	2-1/2"	3"	4"	5"	6"
A	99	110	125	177	188	197	210	248	280	306	595
B	44	52	60	80	87	97	110	133	165	190	254
C	24.9	32.4	37.2	46	54	63.7	76.5	92.2	120.2	145.7	176.5
F	8.2	9.4	20.3	26	33.2	44.2	57.2	68.5	94.5	119.4	144.1
I	14.5	20.8	26.6	33.9	40.7	52.6	67	80.2	104.9	134.1	156.6
h	30.4	31.8	38	43.4	44.8	51.1	51.7	54.7	55.7	61.1	66
H	87.4	85.6	100.4	107.3	110.8	128.4	135.1	161.3	168.4	174.5	207.3

D 型 Model D
母體 - 內螺紋
Female Coupler-Female Thread



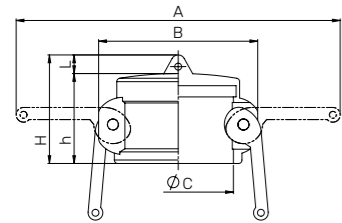
型號 Part NO.	D050	D075	D100	D125	D150	D200	D250	D300	D400	D500	D600
尺寸 Size	1/2"	3/4"	1"	1-1/4"	1-1/2"	2"	2-1/2"	3"	4"	5"	6"
A	99	110	125	177	188	197	210	248	280	306	595
B	44	52	60	80	87	97	110	133	165	190	254
C	24.9	32.4	37.2	46	54	63.7	76.5	92.2	120.2	145.7	176.5
F	17	19	26	31	38	50	62	76	96	121	151
h	31	33	38.2	44.3	43.7	50.5	53.2	54.4	54.9	61.2	63.3
H	46.7	51.6	58.7	67.4	68.3	74.9	81.7	83.8	91.3	95.8	99

CL 母體 FEMALE COUPLER

DC 型 Model DC

母體 - 塞頭

Female Coupler-Dust Cap



型號 Part NO.	DC050	DC075	DC100	DC125	DC150	DC200	DC250	DC300	DC400	DC500	DC600
尺寸 Size	1/2"	3/4"	1"	1-1/4"	1-1/2"	2"	2-1/2"	3"	4"	5"	6"
A	99	110	125	177	188	197	210	248	280	306	595
B	44	52	60	80	87	97	110	133	165	190	254
C	24.9	32.4	37.2	46	54	63.7	76.5	92.2	120.2	145.7	176.5
L	9.6	11.1	11.2	15.3	14.3	10.5	14.7	11.8	15	14	15.2
h	32.3	32.5	37.3	42.2	44.5	50.7	52	53.4	57.3	59	64.8
H	41.9	43.6	48.5	57.5	58.8	61.2	66.7	65.2	72.3	73	80

- 除非另有說明, 否則所有尺寸單位均為 mm
- 數值若是分數, 表示其單位是 inch.
- 上述尺寸僅供參考, 修改不另行通知
- All dimensions are in millimeters unless otherwise specified
- Fractional numbers mean inch size
- Dimensions shown are for reference only and subject to change

www.yeahern.com

